

TUR 560 MN TUR 630 MN TUR630A MN TUR710 MN TUR710A MN

CAPACITY					
Distance between centers	mm	1000 - 2000 - 3000 - 4000 (other size on request)			
Swing over bed	mm	560	630	630	710
Swing over saddle	mm	300	370	370	450
Max. Weight between centers (without steadies)	kg	2000	2000	2000	2000
Max. Weight in chuck only	kg	600	600	600	600

HEADSTOCK					
Top spindle speed ranges	rpm	I: 2-430, II: 200-2500	I: 2-430, II: 200-2500	I: 2-430, II: 200-1850	I: 2-430, II: 200-2500
Spindle nose (DIN 55029)	Camlock	D 1-8	D 1-8	2 x D 1-11	D 1-8
Spindle bore	mm	105	105	140	105
Main drive motor Power max.	kW	18,5	18,5	18,5	18,5
Max. Turning torque	Nm	2100	2100	2800	2100

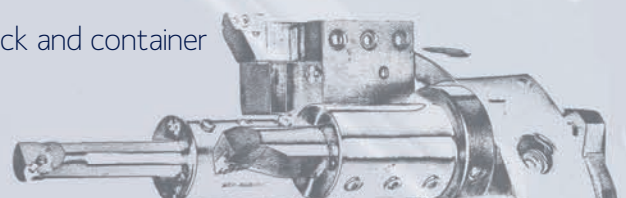
SADDLE					
Cross slide travel X-axis	mm	365	390	390	410
Rapid travel Z-axis	m/min	8	8	8	8
Rapid travel X-axis	m/min	8	8	8	8
Feed force transverse	KN	10	10	10	10
Feed force longitudinal	KN	15	15	15	15
Ball screw Z-axis (1-3m b.c.)	mm	40	40	40	40
Ball screw Z-axis (4m b.c.)	mm	63	63	63	63
Ball screw X-axis	mm	32	32	32	32
Width of cross slideways	mm	230	230	230	230
QC Toolpost Type Multifix	Size	C	C	C	C

TAILSTOCK					
Quill diameter	mm	100	100	100	100
Quill taper		MT 5	MT 5	MT 5	MT5
Quill stroke	mm	200	200	200	200

GENERAL					
Width of bed	mm	433	433	433	433
Total length of machine					
1.000 mm b.c.	mm	3.000	3.000	3.000	3000
2.000 mm b.c.	mm	4.000	4.000	4.000	4000
3.000 mm b.c.	mm	5.000	5.000	5.000	5000
4.000 mm b.c.	mm	6.000	6.000	6.000	6000
Width of machine*	mm	2.500	2.500	2.500	2500
Height of machine	mm	2.100	2.100	2.100	2100
Weight of machine					
1.000 mm b.c.	Kg	3.750	3.750	3.800	3850
2.000 mm b.c.	Kg	4.550	4.550	4.600	4700
3.000 mm b.c.	Kg	5.350	5.350	5.400	5500
4.000 mm b.c.	Kg	6.100	6.150	6.200	6300

*) for transport width of the lathe suitable for standard truck and container

Subject to alteration without prior notice.



FAT Haco offers you the benefit of our vast experience - since the year 1945 over 50.000 machine tools have been sold in many countries around the world

Excellent equipped machine shop, construction research office and our own foundry allows us to manufacture most components by ourselves complete from casting to finished product. FAT works closely with you to develop the absolute best product for your needs. Our experience and quick reaction time will save you both time and money.

Together, let's make creative imagination our only limitation!



for impressive performances

FAT S.A.
Grabiszyńska Street 281
PL 53-234 Wrocław POLAND
Phone: +48 71 36 09 100
Fax: +48 71 36 09 121
e-mail: info@fathaco.com

website: www.fathaco.com

DISTRIBUTOR:

TUR 560/630/710 MN

POWER...PRECISION...PERFORMANCE!



for impressive performances

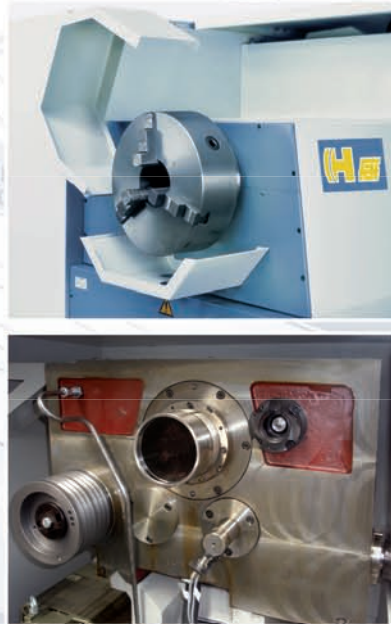


TUR 560/630/710 MN SERIES LATHES.

Exceptional stability with high precision and unrivalled quality, FAT lathes will provide many years of reliable service for your business. The best combination of price and high efficiency - your most cost effective solution. We are confident there is no better choice for your work shop on the market today!

Lathe:
TUR 560/630/710MN is a high precision, high quality European product manufactured 100% in Poland. The purchased parts used in all our products only come from the world leaders in machine tools parts manufacture and supply.

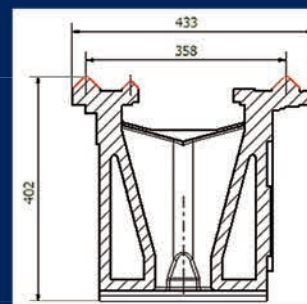
The high level of standard equipment makes the TUR MN lathe a powerful tool which will increase capacity of your work shop from the first day of operation! A large range of easy to install options will fulfil any special requirements.



The heavy duty headstock is located on the induction hardened and ground bed surface, hand scraped to ensure correct alignment and the best possible fit. Made of one piece housing on the TUR560MN and TUR630MN is equipped with strong, high precision spindle bearings guaranteeing excellent stability and accuracy when machining. Available execution with 140mm diameter spindle bore and double spindle nose.



Special 3-V design of machine bed with its deep induction hardened and ground guide ways provides exceptional rigidity and stability on all lathes. All bed lengths are always made as one mono-block casting.

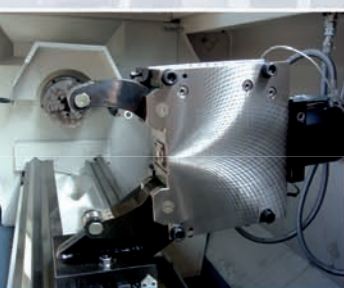


STANDARD EQUIPMENT:

- Siemens CNC System: Sinumerik 840D SL with Shop Turn
- Siemens Service Contract RSV - 1 year
- Quick change toolpost type Multifix Size C (without tool holders and sleeves)
- Work light
- Complete coolant system
- Double door
- Manual tailstock
- Hydraulic aggregate
- Rotating operator panel
- Come-along system - quick coupling between tailstock and cross slide
- Electrical emergency contact between tailstock and cross slide
- Double t-slot on back side of cross slide
- Automatic lubrication for headstock, carriage and cross slide
- "A" version is equipped with a large 140 mm spindle bore and double spindle nose at the front at the rear side (Camlock D1-11)
- Gear change:
 - TUR 560/630/710 MN: manual
 - TUR 630A/710A MN: automatic programmable
- USB Port
- Absolute Encoders

OPTIONAL EQUIPMENT:

- Manual and hydraulic steady rests
- Follow rests
- Various types of chucks:
 - manual - self centering, independent or combined
 - hydraulic
 - pneumatic
 - closed or with through-hole
- T-slots face plates
- 8-position disc type tool turret
- 4-position head type turret
- Parat toolpost
- Hydraulic tailstock
- Automatic gear change ranges
- Chip conveyor
- Spindle positioning with driven tooling
- Boring bar attachments
- Transformer to other voltages than 3 phase 400 V
- Linear scale - measuring system for X-axis and Z-axis
- Not standard length between centers
- Not standard swing over bed & carriage



Wide range of self centering hydraulic steady rests



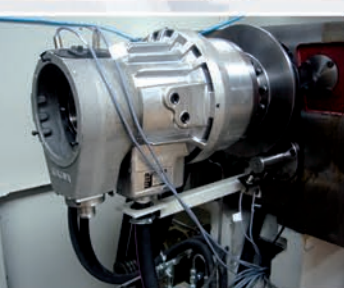
Hydraulic tailstock as an option. Quill diameter 100mm and specially extended neck. Thanks this solution there is easy access for machining close to the tailstock's centre and high rigidity of total construction.



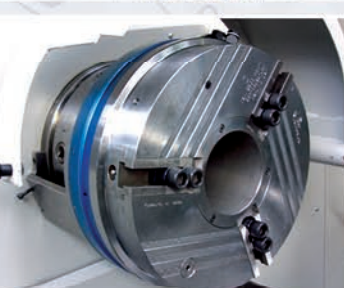
Boring bar attachment mounted on T-slots



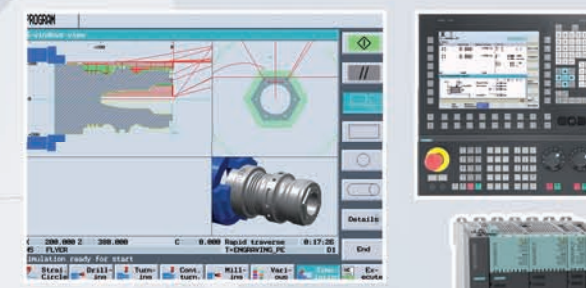
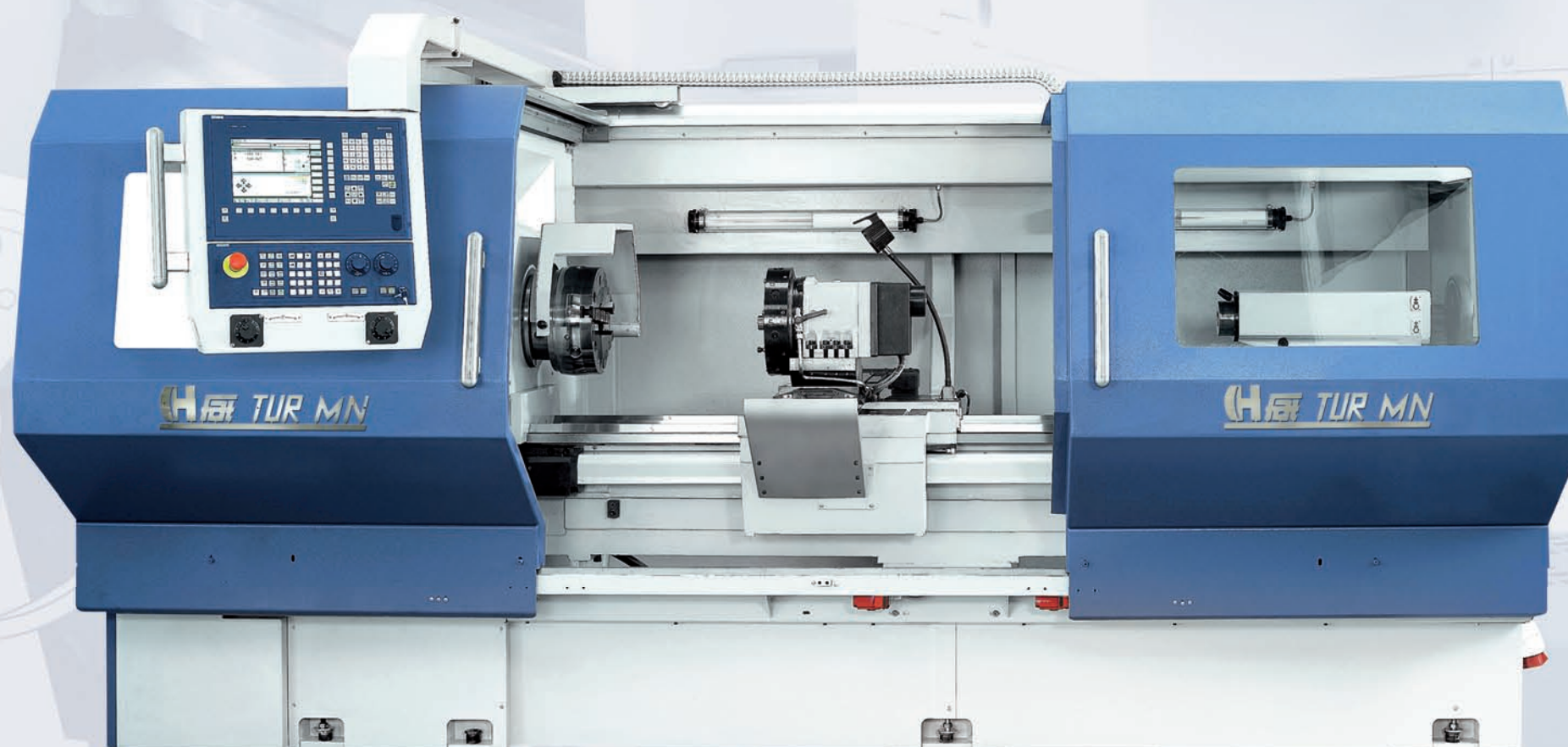
Hydraulic chuck



Actuating cylinder for hydraulic chuck



Pneumatic chuck



Surprisingly easy programming! TUR MN with Siemens 840D SL allows you to work manually, semi-automatic or full CNC. The user friendly Siemens Shop Turn Conversational Programming System will make your work efficient and enjoyable.

Essential features:

- easy programming using graphics and without need for knowledge of DIN/ISO
- extremely short programming time
- clear display of all technical in machining sequence
- prevention of invalid inputs thanks dynamic online graphics
- simply management of tools
- wide range of standard machining and measuring cycles



Fanuc controller as an option

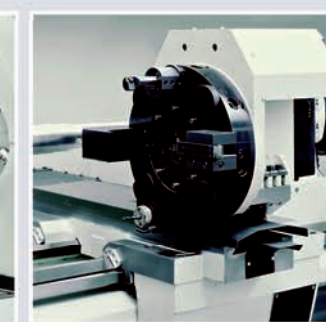
MANY SOLUTIONS OF TOOL MANAGEMENT:



Combination of 2 Sauter horizontal turrets



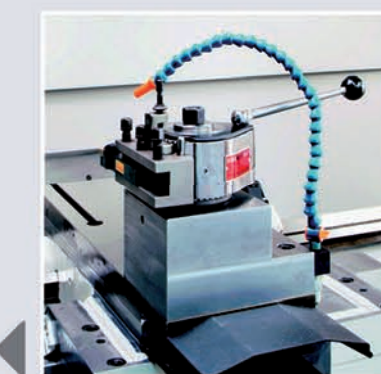
Sauter turret for static tools



Sauter turret for driven tools with options for C-axis spindle positioning:
- indexing 2,5 degrees
- driven by main motor in combination with hydraulic brake and spindle encoder
- full contouring C-axis driven directly by separate servo motor



Parat toolpost with optional Capto tooling



Standard Multifix C toolpost

