



DOT PEEN



COLUMN

# COLUMN-MOUNTED SYSTEMS

Standalone dot peen marking stations

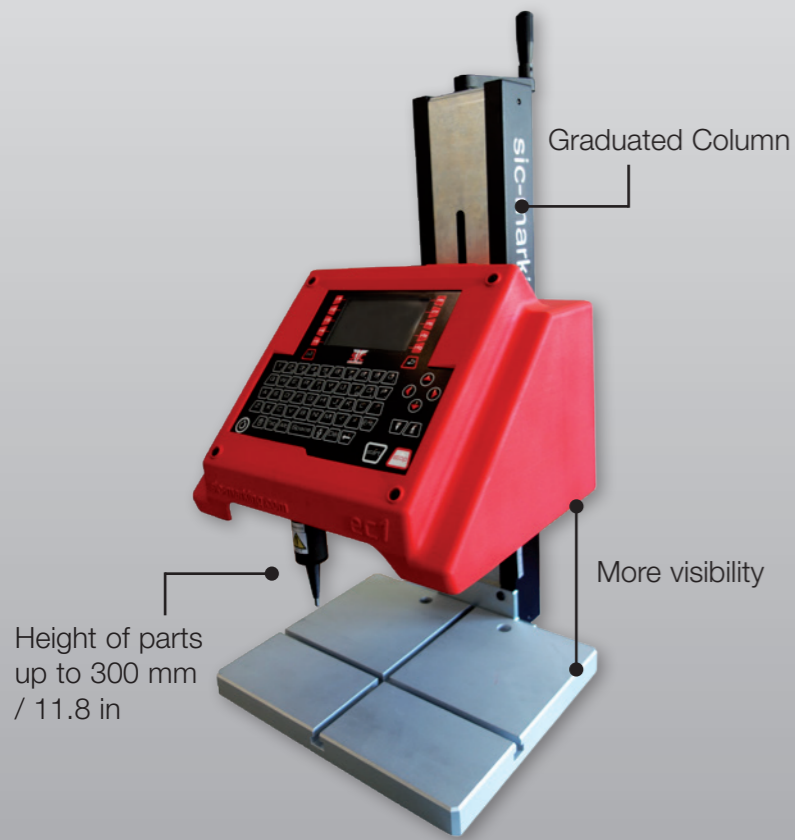


e1 RANGE

ec1



# ec1 Dot Peen Marking Machine



## High Performance

- Consistent precision and quality
- Electromagnetic marking stylus assembly
- High speed and power
- Optimized software

## Simple & Easy to Use

- Rotary D axis (to mark cylindrical parts)
- User-friendly programming
- Wide range of additional options
- Marking on any material (up to 62Hrc)

## Robust & Reliable

- Steel graduated column
- Designed for industrial environments

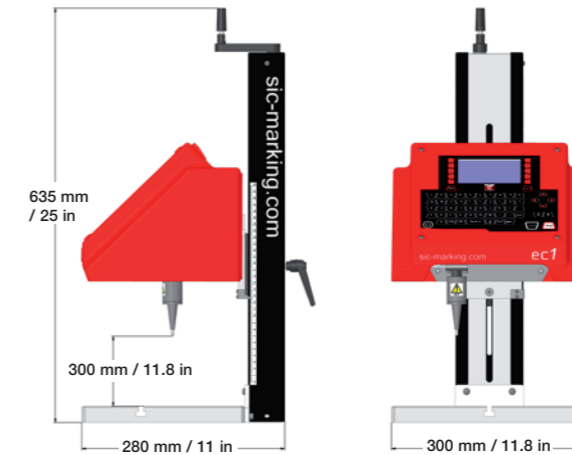
## Cost Effective

- Low initial investment
- No consumables
- No maintenance required

Height of parts up to 300 mm / 11.8 in

## MECHANICAL TECHNICAL FEATURES

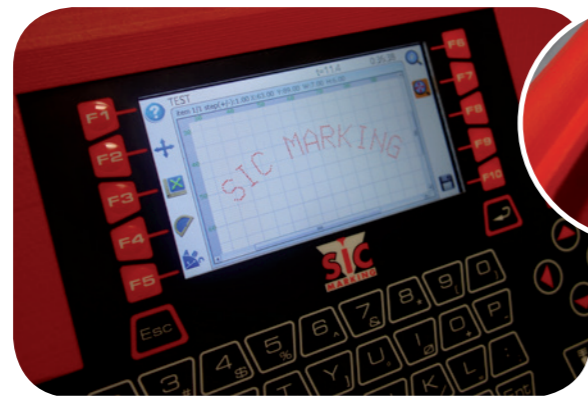
ec1	
Marking window	120 x 100 mm / 4.7 x 3.9 in
Weight	16 kg / 35.2 lbs
Stylus	Carbide - 80 mm / 3.1 in
Maximum part height	280 mm / 11 in (up to 300 mm / 11.8 in with a 60 mm / 2.3 in stylus)
Rotary D axis (option)	For parts up to 150 mm / 5.9 in diameter and 3 kg / 6.6 lbs



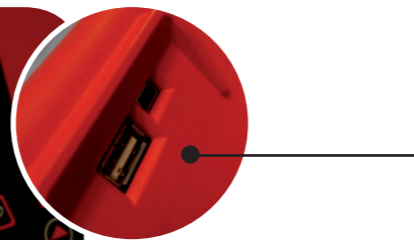
Marking window - 120 x 100 mm / 4.7 x 3.9 in

## ec1 DOT PEEN MARKING MACHINE SPECIFICATIONS

- Intuitive programming using navigation icons.



- USB port to easily transfer all marking files.



## ec1 CONTROLLER



### Characteristics

- Fully programmable
- Angular and circular marking
- HD color screen and USB port
- Standalone operation (no PC required)
- Industrial membrane keyboard
- Software on PC (compatible with Windows 7 and 10)

## MARKING EXAMPLES



## OPTIONS

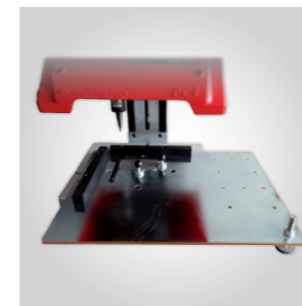
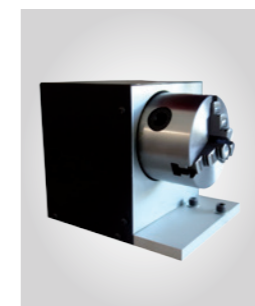


Plate Holder



Wireless Barcode Reader



Rotary Axis



Start Pedal



Button Box



Memory	> 100 Mo
Variable	Alphanumeric, incrementing, Timestamping, barcode
Logo	Downloads from a PC or a USB key
Fonts	5x7, Arial, Courier, OCR, OCR_BOLD, OCRA
Style	Angular, linear, radial, datamatrix, logo
Character Size	From 1 mm to 99 mm (restricted by marking window size)
Impact Force	9 adjustable levels
Depth	Up to 0,3 mm (depending on marked material)
Resolution between Dots	0,05 mm
Password	2 security levels



## Intuitive Software

- Easy and fast handling for a smooth navigation.
- The icons facilitate the user's navigation between the different menus. Edition menu in graphical view and / or in table view (selectable at any time).
- The key points at a glance: the main markings functions are accessible quickly in a menu.
- Complete file editor: strength, quality, displacement, speed, size, font, angle, radius...
- Back up of your marking files and transfer via USB key.
- Many other functions for all types of uses...



## SIC MARKING, A GLOBAL SPECIALIST IN MARKING AND TRACEABILITY SOLUTIONS.

SIC Marking is an international group developing permanent marking solutions and automatic reading systems (datamatrix) for the traceability of industrial components.

With over 25 years of experience, SIC Marking develops traceability applications for a wide range of materials, such as steel, alloys, stainless steel, titanium,

aluminum, and plastics. Today we work with professionals in automotive, aerospace, metallurgy, mechanical engineering, plastics processing, railway, medical, construction, defense sectors...

With an experienced and involved team, SIC Marking provides a complete standard range of dot peen, scribing and laser marking machines, as well as custom systems to meet your needs.

SIC Marking is certified ISO 9001: 2008.



**SIC MARKING**  
 195 Rue des Vergers / 69480 POMMIERS - FRANCE  
 Tel : +33 472 54 80 00 / Fax : +33 478 47 39 40  
 info@sic-marking.com

[sic-marking.com](http://sic-marking.com)